

GREETHAM COMMUNITY NEWSLETTER

BRINGING GREETHAM TOGETHER

Celebrating the unique community spirit that makes Greetham such a special place to live.

February 24

Greetham Community Centre

Fundraiser



Brought to you by



**Saturday
March 23**

**at Greetham Community centre
Doors open at: 06:30pm
Show starts at: 08:00pm**

Adv Ticket: £15 - On the door: £20

Food available to buy

licensed bar

Ticket can be bought via:

www.ticketsource.co.uk/haisfunnycomedy

At The Plough, Greetham

Contact Stephen 07764 631229/

stephen.calnan@btinternet.com

16+



Community Centre Hiring Rates

For more information call 07500 079780 or check out the new Greetham Community Centre website greetham-cc.org which now includes the option to book online.



	Resident Rates Per Hour		Non-Resident Rates Per Hour	
	Summer 1 May - 30 Sep	Winter 1 Oct - 30 April	Summer 1 May - 30 Sep	Winter 1 Oct - 30 April
Hall	£16	£21	£19	£24
Hall with bar	£23	£28	£26	£31
Hall with bar after 11pm	£27	£32	£30	£35
Club Room	£13	£18	£16	£21
Club Room with bar	£20	£25	£23	£28
Club Room with bar after 11pm	£24	£29	£27	£32
Jubilee Room	£13	£18	£16	£21
Whole Facility (not including kitchen & bar)	£23	£28	£26	£31
Sports Rate	£7	£10	£7	£10

Thank You!

We are delighted to announce that this month we have two incredible sponsors - Greetham Comedy Night and Shoestring Theatre Group. We are grateful to our sponsors for their support. Find out more information about these events in this month's edition.

	Single Charge Items
Kitchen - tea/coffee only	Included
Kitchen - standard	£8
Kitchen - catering	£30
Stage	£25
Disco Lights	£25
Sound System	£25

Greetham Vikings Petanque Club AGM 2024

This will take place on Tuesday February 27th 7pm at the Community Centre. Do come along if you are interested in joining us this year and meet the club members. We have two teams that play in the local league as well as running club events. Beginners are very welcome.



For more information contact, Pat Evans on pmemaindy@hotmail.com (01572 813448) or Clare and Peter Hitchcox on hchitch@aol.com (01572 812585)

Catch the Six Nations Together

We'll be screening the 2024 Rugby Six Nations on the big screen at Greetham Community Centre. The bar will be open and food will be available. Head to the Greetham Community Centre website to find out more, or look out for posters.



Services in February at St Mary's Church, Greetham

Sunday 4 February	9.30am	Our World Service - Guest speaker Jacky McBlain from LOROS
Sunday 11 February	9.30am	Breakfast Service (breakfast served at 9am)
Wednesday 14 February	6.00pm	Ash Wednesday Service at Cottesmore
Sunday 18 February	9.30am	Morning Praise
Sunday 25 February	9.30am	Holy Communion

Looking ahead:
The Breakfast service on 10 March will be on **Mothering Sunday**. There will be activities for children and it would be lovely to have young families with us then.

ALL WELCOME AT ALL SERVICES



hgpzumba@yahoo.com
07833452099
hgp_fitness_
HGP Fitness

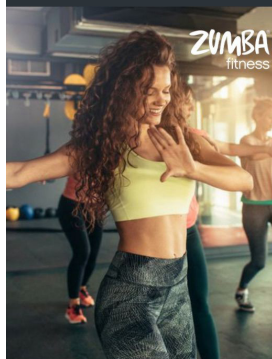
BRAND NEW CLASSES - BEGINNING TUESDAY 9TH JANUARY 2024

GREETHAM COMMUNITY CENTRE, GREAT LANE, LE15 7NG

ZUMBA 6.30-7.30PM & STRONG 7.45-8.30PM

THERE ARE MANY WAYS TO LOSE WEIGHT AND GET FITTER...

SOME ARE JUST MORE FUN!



ZUMBA
fitness

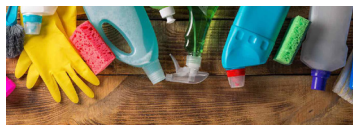


STRONG
NATION

Visit the website for the current timetable and to book:

[HTTPS://HGPZUMBA.SIMPLYBOOK.IT/](https://hgpzumba.simplybook.it/)

Save the Date: Church Spring Clean



A long overdue spring clean of the church has been scheduled for Saturday, 23rd March from 10am to 12pm. Don't forget to bring your own Marigolds. Tea and cake will be provided to all helpers. In case the weather is okay, a churchyard tidy will also take place at the same time. Make sure to mark this date in your calendar and join us in giving the church a fresh and clean look!

Stamford Shoestring Theatre Presents Visitors by Barney Norris

Tuesday 12th - Saturday 16th March 7.45pm

A powerful tribute to love, family and gratitude for a life well-lived, this tender and uplifting play received the Critics' Circle Award 2014. When Kate, a young blue-haired carer, comes into Arthur and Edie's home, the three of them develop a surprising friendship. What follows is an intimate portrait of the love between an elderly couple, the confusion of youth and how one family, made strong by their shared memories of the past, navigates an uncertain present.



Tickets from stamfordartscentre.com and 01780 763203

Highlights of the Village Christmas and New Year Celebrations



Another fantastic Christmas in the village this year kicked off with the kid's Christmas party. Disco Steve kept everyone entertained until Santa arrived to hand out the gifts. A great attendance and fun time were had by all.

Christmas Eve this year saw Santa's sleigh making its way around the village, delivering gifts to the children. This year, the Community Centre

received a grant from Market Harborough Building Society, which covered the cost of the gifts, and Roly & Debbie Easson very kindly provided the sleigh again. A huge thank you to all the helpers, and particularly to our two Santas who really got into the spirit of things. We collected almost £100 from our bucket collection, and this money will be put towards future children's events in the village. All remaining gifts were donated to the Rutland Food Bank.

Finally, another fantastic New Year's Eve celebration was held, with a glitter and sparkle theme. Greetham: you did not disappoint! In true style, people of all ages gathered for a good old-fashioned Greetham knee up; it was a great turnout, and great to see so many embracing the theme! As the clock struck midnight and Auld Lang Syne rang out - we were reminded of just one of the reasons we love this village. Thank you to Greetham's own, WYSIWYG, DJ Paulo and Roly for keeping everyone entertained!



What a fantastic year! As always, thank you to everybody for your continued support. The Community Centre look forward to doing it all again in 2024!

We Need Your News!

If you have any news, events or interesting stories that you'd like to see featured in our next edition, please send it to Zara Young at newsletter@greetham-cc.org by Tuesday 20 February.



Greetham Open Gardens

For 30 years, Greetham has been opening its gardens to the public to raise funds for the fabric of St Mary's Church. Initially, it was to restore the church organ, then the Millenium fund, and now this is the major fundraiser to maintain the Grade I Listed building at the heart of the community.

Beryl Davies and Queenie Creasey initiated the project by opening 18 gardens throughout the village; with garden openings every three years. After Beryl retired away from the village, Trevor Hubbert and Chris Parkin took over, and garden opening became a biennial event, opening between 10 and 12 gardens. In the last few years, the event has changed again to reduce the walking distance for visitors, opening gardens to either the East or the West of Great Lane.

In the early days the garden opening was over two days at the Mayday bank holiday. This has now moved to a single Sunday in early June to benefit from peak garden flowering. The weather is never assured. We have experienced everything from cold driving rain to the last opening being so hot many people stayed at home in the shade.

Every Open Gardens in Greetham is different. Over the 30 years, 13 events have taken place, with a total of 69 different gardens being showcased. Greetham House and 34 Church Lane have been open

the most (7), closely followed with 6 openings by 10A Church Lane, Allstoe House Church Lane and 3 Little Lane.

In the early years, organ music in the church was an added attraction, as well as a raffle, with a plant stall being introduced in 2002. And, of course, the ever-popular tea and cakes in the church have always added to the event. A total of £15,252.23 has been raised over this time to maintain the fabric of the church.

In the last few years, a separate plant sale has been introduced for late May during the non-open Garden year. This year, the plant stall will be on Saturday, 25th May. Pot up any spare plants, and come and support this important fundraiser. This year, all proceeds are going towards renovating the clock chimes, and then the church bells will need servicing. All monies go towards the maintenance of the church fabric, which is the responsibility of the whole village.

Sheerwood Skip Services Recycling & Transfer Station

Wood Lane ~ Greetham ~ Rutland LE15 7SN
email: sheerwoodskipservices@hotmail.co.uk

Suppliers of - Skips
Sand • Gravel • Granite
Ballast • Top soil



Tel: 07850 144 367 • 01780 460065
answer machine service

Join the Craft Group for February Meetings

The Craft Group meetings for the month of February will take place on Tuesday 6th and Tuesday 20th. The venue for the meetings is the Club Room of the Community Centre. You are welcome to join anytime between 9:30 am and 12:30 pm. They charge a fee of £1 for every hour that you spend with them, with tea, coffee, and biscuits available. The meetings are a great opportunity to catch up with old friends and make new ones. It's a friendly group, and they are always happy to welcome new members. If you are unsure about joining, feel free to come along for a cuppa and have a chat. If you have any questions, please do not hesitate to Gill Hodson, at 813902.



The War Widow's Wedding

Join us for an evening of
fun, food and **MURDER**
On Saturday 2nd March

Courtesy of Invitation 2 Murder

Doors Open 6.15pm

Arrive before 7pm or you might miss something

Tickets £20 pp including a 2 course
meal & a **MURDER**

Numbers are strictly limited

Tickets: Please contact

ken@kenandlinda.co.uk 07954 803339

MURDER
MYSTERY



It's 1946 and war is finally over. You are all invited to the wedding reception of war widow Jane Rushton and Major Andrew St. John Davidson. Jane and Andrew are to be married in the afternoon. It will be a quiet, family affair, but they wish to celebrate with everyone in the evening. But what secrets does the Major keep? How much does Jane know – and what did actually happen to her late husband?

Greetham Cinema Club

Tickets £5
Aged 15+

Greetham
Community
Centre



"Barbie Movie" - A
Whimsical and
Empowering Adventure
for All Ages

Big Screen
Surround Sound
Bar Open
Refreshments
Snacks

Friday 16th February @19:30
Doors open 18:45

Tickets available
on the door

WE ARE YOUR LOCAL PERSONAL TAXATION EXPERTS & BUSINESS ACCOUNTANTS

- Do you need help to complete your Self Assessment Tax Return?
- Do you need fresh eyes to look at your Business Accounts?
- Do you have any other personal tax problems?
- Do you want to learn about Cloud Accounting and understand the benefits to your business from Xero Accounting?

*We have over 30 years' experience advising clients.
Our office is in Oakham town-centre on Gaol Street.*

For a free no-obligation appointment please contact
01572 770552 or hello@arcus-rutland.co.uk

arcus-rutland.co.uk

A Message from Ken Edward (Chair of Greetham Parish Council)

A meeting will be held at the Community Centre at 6.30pm, on Thursday 8th February, to discuss traffic issues connected with Bridge Lane access to Main Street. Please can I ask all interested parties to attend so that we can get a total picture of the situation as it stands. Your Parish Council has very limited powers and needs to be in command of all the facts before making further approaches to Rutland County Council. I look forward to meeting you all.

A Prickly Subject



The next Greetham Goes Wild talk on Hedgehogs by Prickleback Urchin Hedgehog Rescue will be held on 26th February at the Community Centre. Attendance is FREE. Contact Barbara: b.clarke592@gmail.com or Karen: karen@mccombiesmith.co.uk for more information.

Soups & Sweets

BY THE LADIES OF
GREETHAM WI



TICKETS

Adults £10

Children
(Under 10) £5

4 FEBRUARY 2024
12.30 FOR 1.00PM

An amazing and delicious selection of homemade soups & desserts from the ladies of Greetham WI. Try something new or enjoy your favourites.

Greetham Community Centre

For tickets please contact Jayne Isaac
Telephone: 07960019365

Join Us for a French Lunch

Join the Greetham Vikings Petanque Club for a French Lunch on Sunday, February 25th, 2024. The event will be held at the Community Centre, starting at 12:30 pm for a prompt 1 pm start. The menu will include a delicious main course, dessert, and cheese, all for just £15.

To reserve your tickets or for more information, please contact Peter or Clare Hitchcox at 812585 or HCHitch@aol.com, or Pat Evans at 813448 or pmemaindy@hotmail.com. All are welcome to attend, so come along and join us for a fun-filled afternoon of food and socializing!

Greetham Parish Council Reduced Minutes Meeting on 10 Jan 2024

Members Present: Mr K. Edward (KE) – Chair, Mrs J. Denyer (JD), Mr D. Baker (DB), Mrs A. Jenkins (AJ), Ms. J. Shelton (JS), Mr J. Earl-Fraser (JE), Mrs. R. Chipperfield (RC), Cllr. N. Begy (NB) – Ward Member, Mrs J. Isaac (Clerk) 5 members of the public attended.

Prior to the start of the meeting, Barbara Clarke & Karen Mellor gave a short presentation on Greetham Goes Wild including funding that has been secured from the Tree Council for a large project to reinstate 100m of hedgerow in Merry's Meadows.

The proposed draft budget for 2024/25 had been circulated to all Councillors prior to the meeting. The Chair went through the expenditure and gave an explanation against each heading. V2 of the budget was discussed and revised to include funds for a new website, as the current platform is not being supported anymore so is no longer viable. JE agreed to contact the existing web designer plus two others to get quotes for discussion at the next meeting. It was proposed to increase the precept to £21,500 to include the quarry dust monitoring, traffic measures, Biodiversity project and GCC project support. After discussion, there was a vote with unanimous approval to increase the budget. Clerk to put in the re S106 monies and CIL update re quarry development. The Chair reported that he is still pursuing when S106 monies will be received.

Approval of details required by Condition Planning Permission Ref: 2020/0297/MIN

Discharge of conditions 18, 21, 23, 25, 46 & 75 in relation to 2020/0297/MIN – North Western extension to Greetham Quarry including the extraction of Limestone and building stone and importation of suitable inert material.

Greetham Quarry, Stretton Road, Greetham.

DB provided an update: Mick George has applied to discharge conditions and those proposals fall short of what is required as acceptable to GPC. The Environmental Health Agency have accepted the discharge of conditions put forward by MG and they have been signed off. Hence, GPC need to carry out independent quarry dust monitoring. GPC have budgeted to take on the quarry dust monitoring through Ricardo Consultancy (Government advisors)– this has been approved in principle in the 24/25 budget (Ref 167.9). Agreed to bring back to a further meeting when activation is needed.

Planning Application 2023/1250/FUL

Extension to existing travelling show persons site, comprising of 7 no. additional yards, extension to existing yard and creation of recreation/amenity area. Five Counties Park, Greetham Inn Lane, Greetham, Rutland LE15 7SB (Revision of existing approved plans) GPC have no objections. Clerk to enter Support on Planning Portal

Planning Application 2023/1283/NMA

Non-Material Amendment in relation to application ref: 2021/1385/FUL (Variation of condition 3 in relation to Application Reference 2020/0142/FUL – Demolition of the existing Ram Jam Inn and redevelopment of the site to provide two drive-thru units (Use Class A3/A5) with associated parking and landscaping. The Non Material Amendment seeks permission for the removal of service yard area and introduction of an external seating terrace and bin store – Unit 1. Ram Jam Inn, Great North Road, Greetham, Rutland LE15 7QX. GPC have no objections. Clerk to enter Support on Planning Portal

Planning Application 2023/1360/FUL
Change of roof covering material to slate. The Barn, Far Wood Lane, Greetham, Rutland LE15 7QT. GPC have no objections. Clerk to enter Support on Planning Portal
Planning Application 2023/0976/FUL
Extending existing Solar panel system by 8 panels, situated evenly either side of existing panels. Manor Farm, 1 Little Lane, Greetham, Rutland LE15 7NQ. The Chair reported that GPC had received a reply to an official complaint put to RCC in November. GPC are still not satisfied with the reply.
Update on Bridge Lane - Mirror Removal The mirror which had been removed, has now been returned to the resident in Bridge Lane. The resident has been informed of best practice to site this, and it is with the resident to take action Update on complaint from Church Lane residents regarding traffic Large lorries/farm vehicles travelling up Church Lane have caused damage to the curb side and potential damage to the bridge and stone walls. RCC Highways have contacted the farmer and it has been agreed to send lorries/farm vehicles the opposite way – East end of Church Lane. Clerk to write to Highways to ask if the bridge has been checked for safety.
Significant Planning Application Team Local Plan Regulation 18 comments from GPC. CPRE held a meeting with the MP present. It was requested that an extension to the consultation period was granted. There has been no agreement to extend the date. GPC feel the plan is poorly produced and question its validity in its current state. This was also the opinion of CPRE and our MP and many other villages. Street & Services Team Village wide Traffic Calming Plan: A Meeting has been arranged with RCC Portfolio Holder, Cllr Christine Wise on 31st January at GCC to discuss issues related to highways, traffic and other services. Environment Planning Team Biodiversity - DB explained the split into 2 distinct groups: A local community group, called Greetham Goes Wild and a PC Strategic group working/liasing with landowners. Flooding - Due to the recent flooding in the village, a meeting is arranged at RCC. KE to write a review of what happened in Greetham to be put to the meeting. Spring Litter Pick - DB to contact LH to ask her to organise the next Litter Pick in March/April.
Community Centre JD reported that the skatepark had failed its annual inspection due to health and safety. As a result, the skatepark has been fenced off and decommissioned. It is hoped to reopen the safe areas as soon as possible. JS has stood down as a Trustee of the Community Centre. Another Councillor is needed to replace JS. The Chair asked for other Councillors to consider taking on the role – agreed to carry forward to February meeting.
Police North Beat Report for November Greetham: Theft from motor vehicles, items stolen, no signs of damage.

Next Meeting: Wednesday 14 February, 7pm at the Community Centre

For sight of the full minutes just search Parish Council Minutes on www.greethamrutland.com or find them on the Parish Council Noticeboard on the Village Green.



Exton and Greetham CE Primary School

Serving the communities of Greetham and Exton

A Great Start to the Year

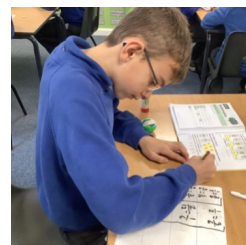
As I write, we are nearly three weeks into the first term of 2024, and already we seem to be busy, busy, busy!

This term we have lots of activities in and out of school, alongside our normal curriculum. Our youngest children are taking part in Balance Bikes workshops and are also receiving additional music sessions learning about pitch with the Rutland Music Hub. The Rutland Music Hub are also working with the Year 2,3,4 children to develop their singing skills. Year 5 and 6 were recently visited by one of our governors to learn more about Judaism, and are visiting Oakham for their weekly swimming lessons up until Easter. Despite all of these activities, perhaps the most exciting thing this term so far has been Miss Barker visiting to introduce us to her new baby!



In the classrooms the children are all hard at work, learning about their new topics, alongside maths and English.

Aqua Class are 'polar explorers' this term; Teal Class are learning all about the Egyptians; and Cobalt Class are exploring outer space.



If you would like to find out more about the school, do visit our website

www.extonschool.co.uk

We are always happy to show prospective parents around the school.

Please contact the school office on 01572 812380 or via email at extonoffice@rltschools.com to arrange a visit.